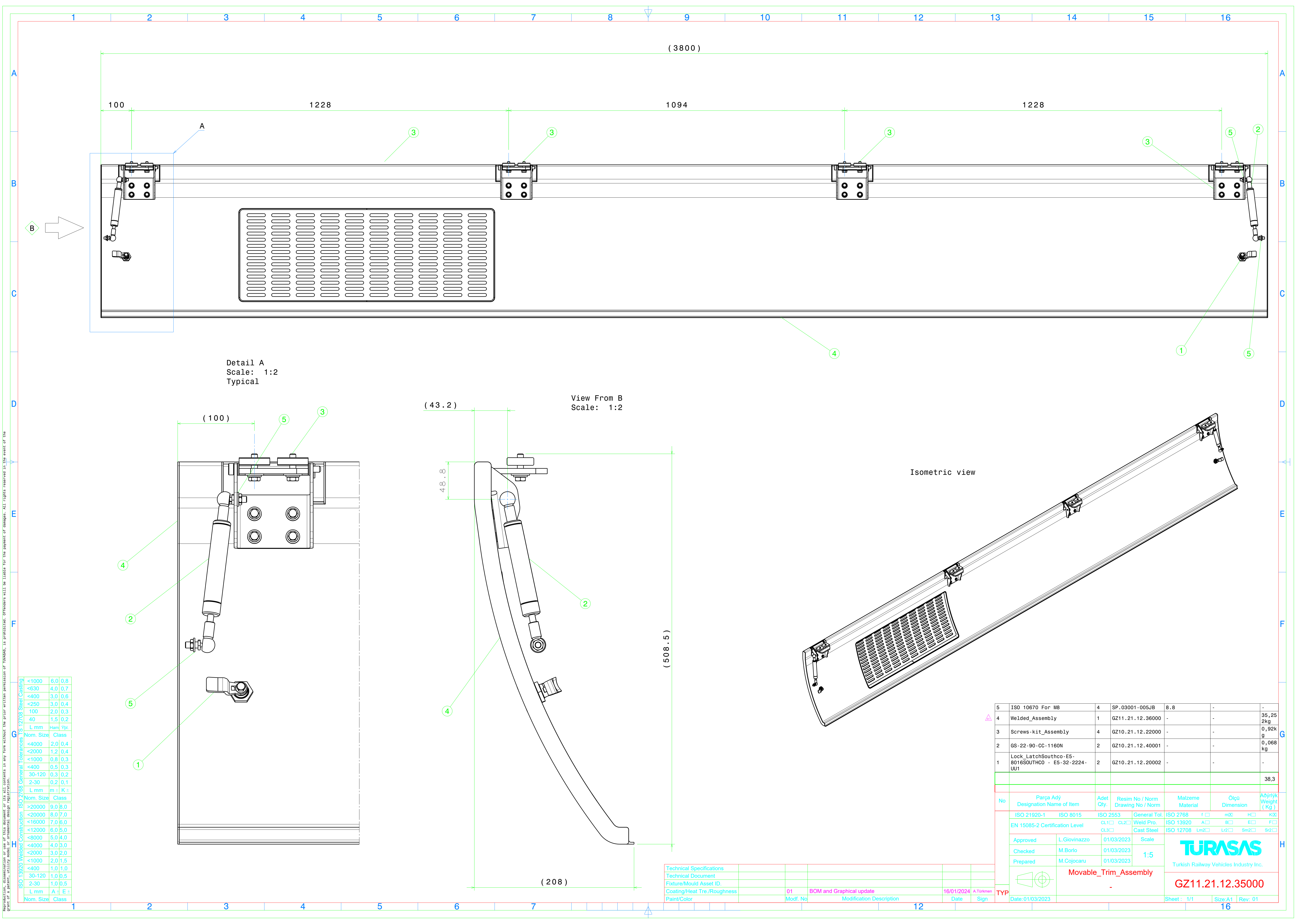


Reproduction or use of this document or its all contents in any form without the prior written permission of TURASAS is prohibited. Offenders will be liable for the payment of damages. All rights reserved in the event of the right of a patent, utility model, design, copyright.



Detail A  
Scale: 1:2  
Typical

View From B  
Scale: 1:2

Isometric view

ISO 13920 Welded Construction		
<1000	6,0	0,8
<630	4,0	0,7
<400	3,0	0,6
<250	3,0	0,4
100	2,0	0,3
40	1,5	0,2
L mm	Ham	Ypl.
Nom. Size	Class	
<4000	2,0	0,4
<2000	1,2	0,4
<1000	0,8	0,3
<400	0,5	0,3
30-120	0,3	0,2
2-30	0,2	0,1
L mm	m ±	K ±
Nom. Size	Class	
>20000	9,0	8,0
<20000	8,0	7,0
<16000	7,0	6,0
<12000	6,0	5,0
<8000	5,0	4,0
<4000	4,0	3,0
<2000	3,0	2,0
<1000	2,0	1,5
<400	1,0	1,0
30-120	1,0	0,5
2-30	1,0	0,5
L mm	A ±	E ±
Nom. Size	Class	

Technical Specifications					
Technical Document					
Fixture/Mould Asset ID:					
Coating/Heat Tre./Roughness					
Paint/Color					
01	BOM and Graphical update	16/01/2024	A.Turkmen		
Modf. No	Modification Description	Date	Sign		

5	ISO 10670 For M8	4	SP_03001-005JB	8.8	-	-	-
4	Welded_Assembly	1	GZ11.21.12.36000	-	-	-	35,25 2kg
3	Screws-kit_Assembly	4	GZ10.21.12.22000	-	-	-	0,92k g
2	GS-22-90-CC-1160N	2	GZ10.21.12.40001	-	-	-	0,068 kg
1	Lock_LatchSouthco-E5-8016SOUTHCO - E5-32-2224-UU1	2	GZ10.21.12.20002	-	-	-	-
							38,3
No	Parça Adı Designation Name of Item	Adet Qty.	Resim No / Norm Drawing No / Norm	Malzeme Material	Ölçü Dimension	Ağırlık Weight (Kg)	
	ISO 21920-1	ISO 8015	ISO 2553	General Tol.	ISO 2768	f □ mX □ H □ KX □	
	EN 15085-2 Certification Level	CL1 □ CL2 □	Weld Pro.	ISO 13920	A □ B □ E □ F □		
	Approved	L.Giovinazzo	01/03/2023	Scale	ISO 12708	Ln2 □ Lr2 □ Sm2 □ Sr2 □	
	Checked	M.Borio	01/03/2023	1:5			
	Prepared	M.Cojocar	01/03/2023				
	Movable_Trim_Assembly						
	-						
	TURASAS						
	Turkish Railway Vehicles Industry Inc.						
	GZ11.21.12.35000						
	-						
	TYP						
	Date:01/03/2023						
	Sheet : 1/1						
	Size:A1						
	Rev: 01						